

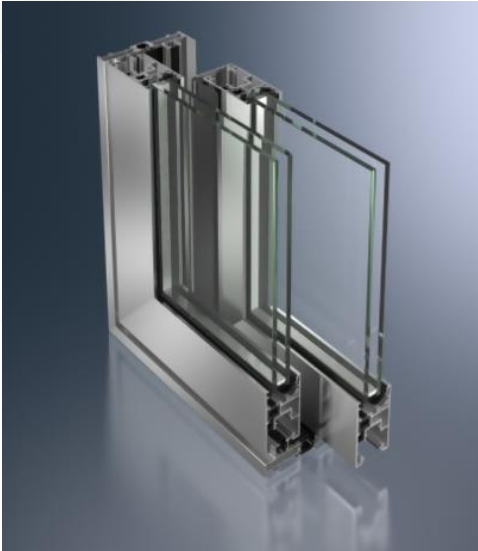
ALUMINUM FRAMES, FAÇADES AND SKYLIGHTS



SCHÜCO ASS 50 SLIDING SYSTEM

Schüco ASS 50 is ideal for large frames (heights up to 3m or 10 feet).

SCHÜCO ASS 50 SLIDING SYSTEM



Sliding system Schüco ASS 50 HI

Handle

Specially developed for private houses and buildings, Schüco ASS 50 sliding system broadens perspectives for creativity and ergonomic in the universe of large windows. This system offers many design options and a wide range of colours allowing for a more traditional or modern design.

The ASS 50 thermally insulated sliding and lift-and-slide system connects the outstanding qualities of a robust vent frame with a narrow face width for rooms flooded with light. The extra-flat profile allows better access for people with reduced mobility.

SCHÜCO ASS 50 SLIDING SYSTEM	
Technical data	Value
Thermal insulation	$U_w = 1,9 \text{ W}/(\text{m}^2\text{K})$
Basic depth of vent frame	50 mm (1,97 in)
Vent size	Max. 3.000 x 3.000 mm (118,11 x 118,11 in)
Vent weight	Max. 400 kg (881,14 lbs)
Security class	RC2 (WK2)
Number of tracks	1 – 3

SCHÜCO ASS 50 SLIDING SYSTEM



SCHÜCO ASS 50 SLIDING SYSTEM

Product benefits	Fabrication benefits
<ul style="list-style-type: none"> • Weather tightness up to class 9A in accordance with DIN EN 12208. • Wide choice due to single, double and triple track outer frames. • Sound insulation in accordance with DIN EN ISO 140-3 and DIN EN ISO 717-1, $R_w \leq$ dB. • Glazing thickness 8-32mm (0.31-1.26 in). • Flat outer frame profile as continuous frame. • Wide choice of colours – different inside and outside. 	<ul style="list-style-type: none"> • High degree of flexibility due to customers being able to roll their own profiles together. • Can be combined with top lights, side sections or spandrel panels from Schüco Window series AWS 50, 60 or 65. • The fully concealed Schüco e-slide drive system can be added as an option.

SCHÜCO ASS 50 SLIDING SYSTEM

Schüco e-slide drive system

The fully concealed Schüco e-slide drive system opens, closes and locks even floor-to-ceiling slide-and-lift units. For the first time the use of access control also allows access from outside.

Features and benefits

- Easy, energy-saving control panel on the vent, external button in the room or centrally via building management technology.
- New, handle-free design solutions with clean lines.
- Coupling with fingerprint system or radio signal possible.
- Leaf weights up to 250Kg (551lbs).
- Leaf sizes up to 3000 x 3000mm (118,11 x 118,11in).



Schüco e-slide control panel



Large, transparent opening unit with Schüco e-slide



External fingerprint sensor